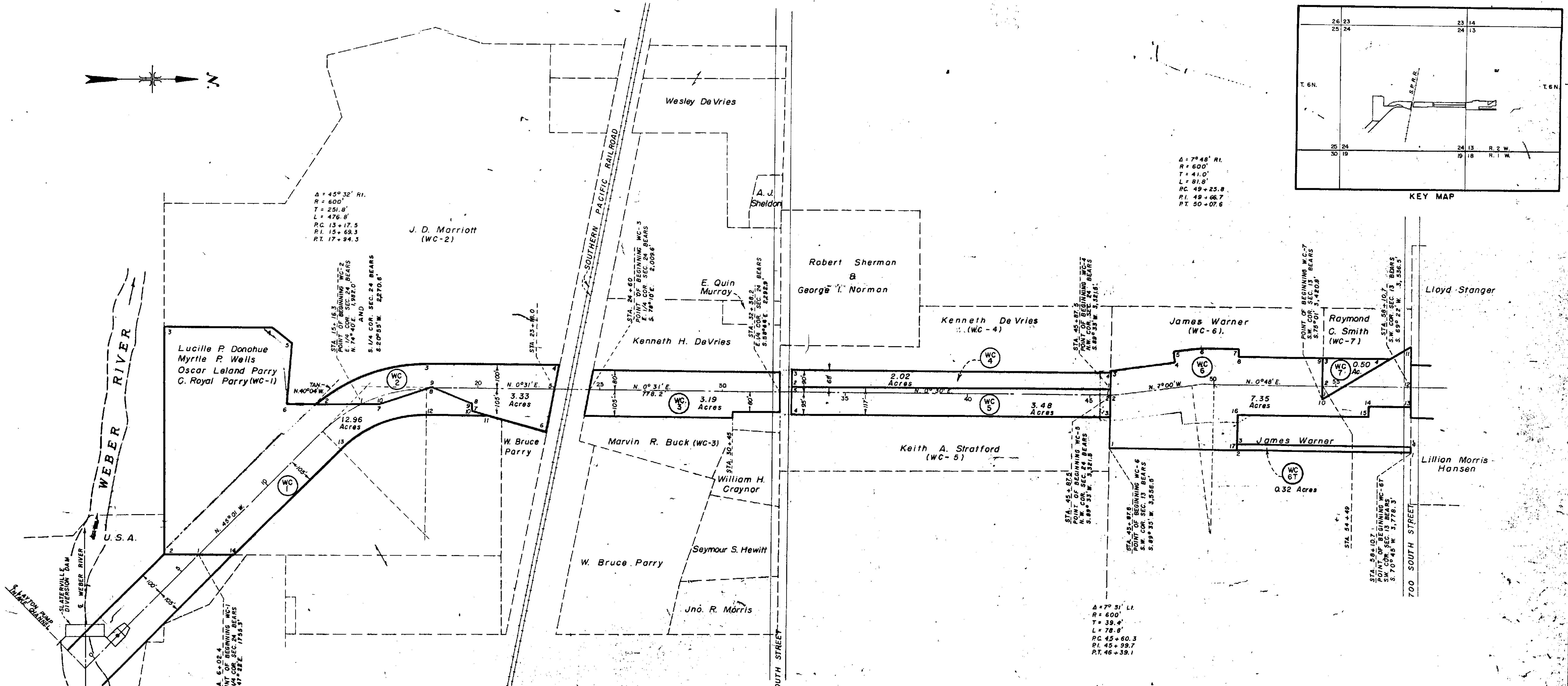


$\Delta = 7^\circ 48' \text{ RI}$
 $R = 600'$
 $T = 41.0'$
 $L = 81.8'$
 $PC = 49 + 25.8$
 $PI = 49 + 66.7$
 $PT = 50 + 07.6$

$\Delta = 45^\circ 32' \text{ RI}$
 $R = 600'$
 $T = 251.8'$
 $L = 476.8'$
 $PC = 13 + 17.5$
 $PI = 15 + 63.3$
 $PT = 17 + 94.3$

$\Delta = 7^\circ 31' \text{ LI}$
 $R = 600'$
 $T = 39.4'$
 $L = 78.8'$
 $PC = 45 + 60.3$
 $PI = 45 + 99.7$
 $PT = 46 + 39.1$



PARCEL WC-1

COURSE	BEARING	DISTANCE
1-2	SOUTH	141.4
2-3	WEST	935.0
3-4	NORTH	441.9
4-5	N. 39° 26' E.	100.0
5-6	S. 85° 09' E.	257.0
6-7	N. 0° 51' W.	389.0
7-8	N. 17° 51' W.	216.5
8-9	N. 21° 21' E.	179.7
9-10	EAST	30.0
10-11	N. 10° 55' E.	65.1
11-12	S. 0° 31' W.	248.7
12-13	S. 89° 00' E.	ARC = 393.4
13-14	E. 48° 01' E.	610.1
14-1	SOUTH	148.5

PARCEL WC-2

COURSE	BEARING	DISTANCE
1-2	S. 0° 30' E.	185.7
2-3	N. 700'	ARC = 495.9
3-4	N. 0° 31' E.	543.0
4-5	S. 78° 35' E.	101.8
5-6	S. 78° 35' E.	175.3
6-7	S. 15° 33' W.	318.2
7-8	WEST	30.0
8-9	S. 21° 21' W.	179.7
9-10	S. 17° 51' E.	216.5
10-1	S. 0° 30' E.	90.0

PARCEL WC-4

COURSE	BEARING	DISTANCE
1-2	S. 0° 30' W.	1299.2
2-3	WEST	68.0
3-4	N. 0° 30' E.	1299.2
4-1	EAST	68.0

PARCEL WC-6

COURSE	BEARING	DISTANCE
1-2	WEST	214.0
2-3	WEST	99.1
3-4	N. 75° 00' W.	270.3
4-5	S. 83° 00' W.	50.0
5-6	N. 75° 00' W.	108.9
6-7	N. 0° 48' E.	148.9
7-8	S. 89° 12' E.	35.0
8-9	N. 0° 48' E.	342.5
9-10	EAST	167.0
10-11	NORTHWESTERLY	420.0
11-12	S. 65° 45' E.	168.1
12-13	S. 89° 45' E.	78.0
13-14	S. 0° 48' W.	173.7
14-15	S. 89° 12' E.	42.0
15-16	S. 0° 48' W.	532.0
16-17	S. 89° 12' E.	141.1
17-1	S. 0° 30' W.	512.2

PARCEL WC-5

COURSE	BEARING	DISTANCE
1-2	EAST	21.0
2-3	EAST	96.0
3-4	S. 0° 30' W.	1299.2
4-5	WEST	117.0
5-1	N. 0° 30' E.	1299.2

PARCEL WC-6T

COURSE	BEARING	DISTANCE
1-2	S. 0° 30' W.	707.4
2-3	N. 89° 12' W.	20.0
3-4	N. 0° 30' E.	707.2
4-1	S. 89° 45' E.	20.0

PARCEL WC-7

COURSE	BEARING	DISTANCE
1-2	WEST	32.0
2-3	WEST	115.0
3-4	N. 0° 48' E.	261.7
4-1	SOUTHEASTERLY	308.4

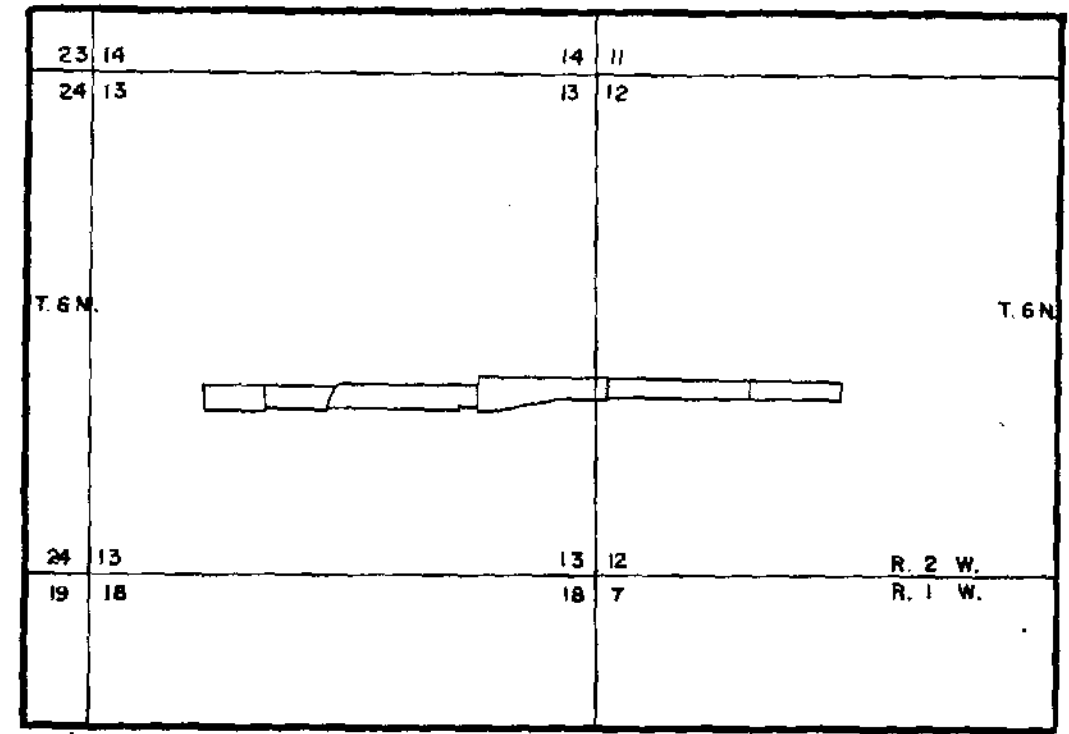
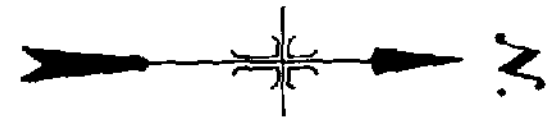


3-9-61 412	REVISED DESCRIPTION PARCEL WC-6, ADDED PARCEL WC-6T
2-13-61 412	CHANGED TIES WC-4, 5, 6, & 7. CHANGED POINT OF BEGINNING WC-5 & 7.
12-20-60 412	CHANGED PROPERTY OWNERSHIP FROM K.D.P.R. INC. TO ROBERT SHERMAN AND GEORGE I. NORMAN.
11-25-60 412	ADDED WEBER RIVER LOCATION. REVISED DESCRIPTION PARCEL WC-1
10-3-60 412	REVISED SEC. COR. TIES, AND DESCRIPTION OF PARCELS WC-1, 2, 3, 4, 5, 6, & 7.

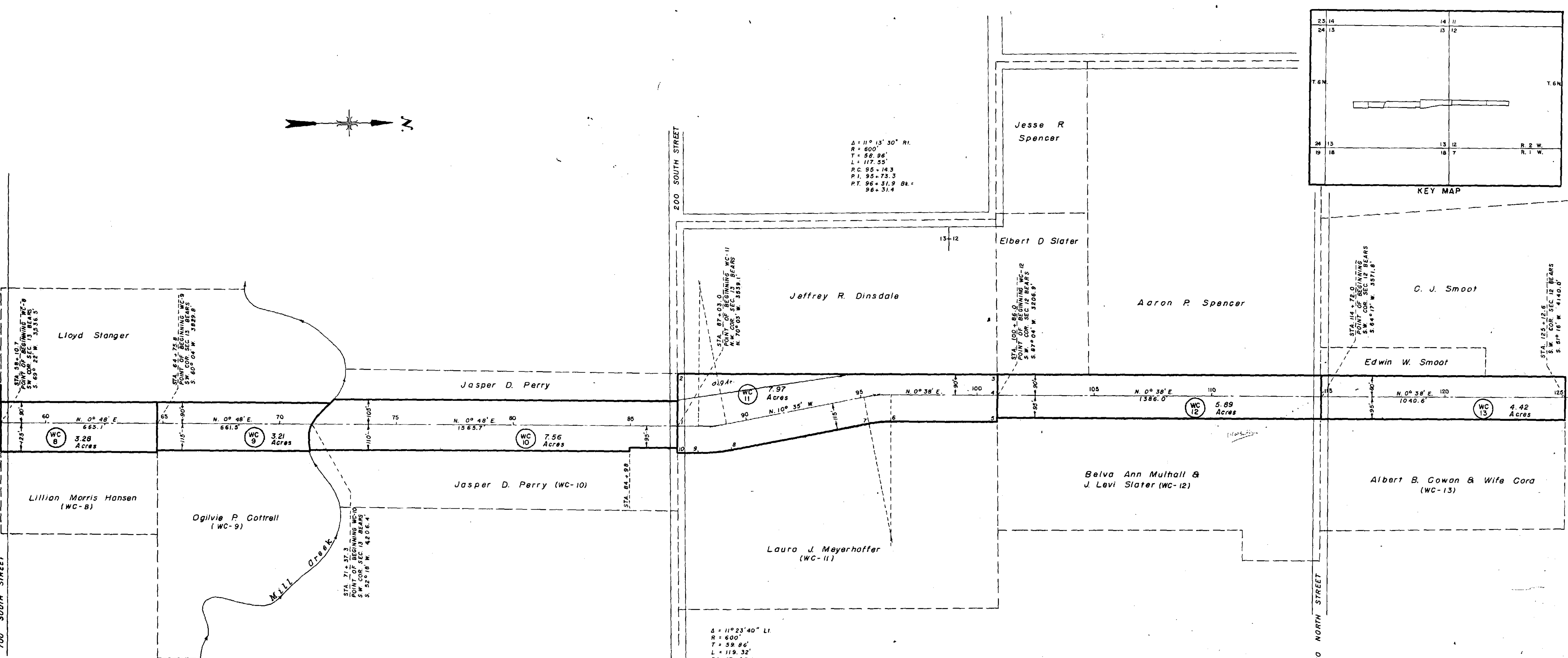
UNITED STATES
 DEPARTMENT OF THE INTERIOR
 BUREAU OF RECLAMATION
WEBER BASIN PROJECT - UTAH
WILLARD CANAL
 STA. 6+02.4 TO STA. 58+10.7
RIGHTS OF WAY MAP

DRAWN R. S. H. SUBMITTED *R. S. H.*
 TRACED R. S. H. RECOMMENDED *R. S. H.*
 CHECKED *W. J. P.* APPROVED *Clinton D. Woods*

WEBER BASIN PROJECTS OFFICE OGDEN, UT
 SHEET 1 OF 9 SHEETS 3-18-60 **526-412-4969**



KEY MAP

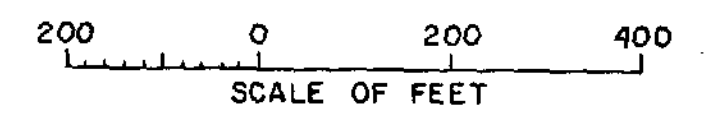


$\Delta = 11^{\circ} 13' 30''$ RI.
 $R = 600'$
 $T = 56.96'$
 $L = 117.55'$
 $P.C. 95 + 14.3$
 $P.I. 95 + 73.3$
 $P.T. 96 + 31.9$ Bk. =
 $96 + 31.4$

$\Delta = 11^{\circ} 23' 40''$ LI.
 $R = 600'$
 $T = 59.86'$
 $L = 119.32'$
 $P.C. 87 + 95.1$
 $P.I. 88 + 55.0$
 $P.T. 89 + 14.5$

PARCEL WC-11

COURSE	BEARING	DISTANCE
1-2	N 89° 45' W	219.9
2-3	N 0° 15' E	1370.8
3-4	EAST	90.0
4-5	EAST	115.0
5-6	S 0° 30' W	454.5
6-7	R = 485'	ARC = 95.0'
7-8	S 10° 35' E	599.8
8-9	R = 715'	ARC = 142.2'
9-10	S 0° 48' W	92.0
10-1	N 89° 45' W	116.0



12-2-60
#12

REVISED TIES, TRACTS WC-11, WC-12, WC-13.

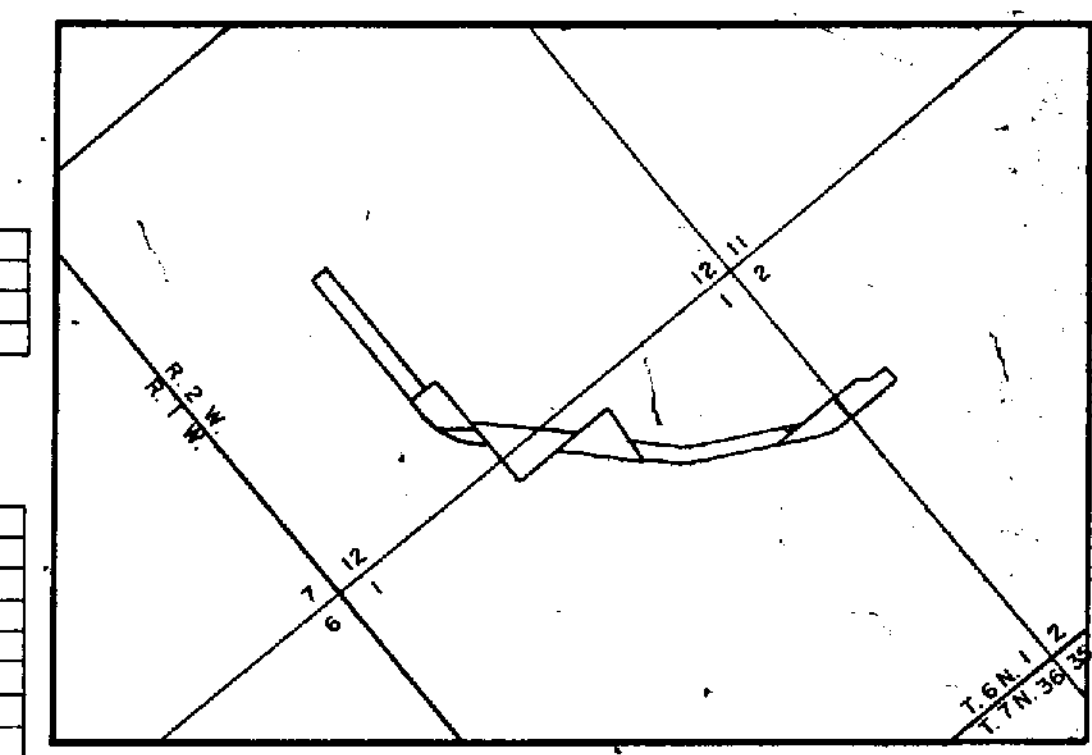
UNITED STATES
DEPARTMENT OF THE INTERIOR
BUREAU OF RECLAMATION
WEBER BASIN PROJECT-UTAH
WILLARD CANAL
STA. 56+10.7 TO STA. 125+12.6
RIGHTS OF WAY MAP

DRAWN R. S. M. SUBMITTED *R. S. M.*
 TRACED R. S. M. RECOMMENDED *R. S. M.*
 CHECKED *WJC* APPROVED *Clinton D. Woods*

WEBER BASIN PROJECTS OFFICE OGDEN, UT.
SHEET 2 OF 9 SHEETS 3-19-60 526-412-4970

13
18

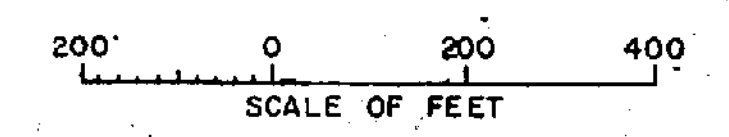
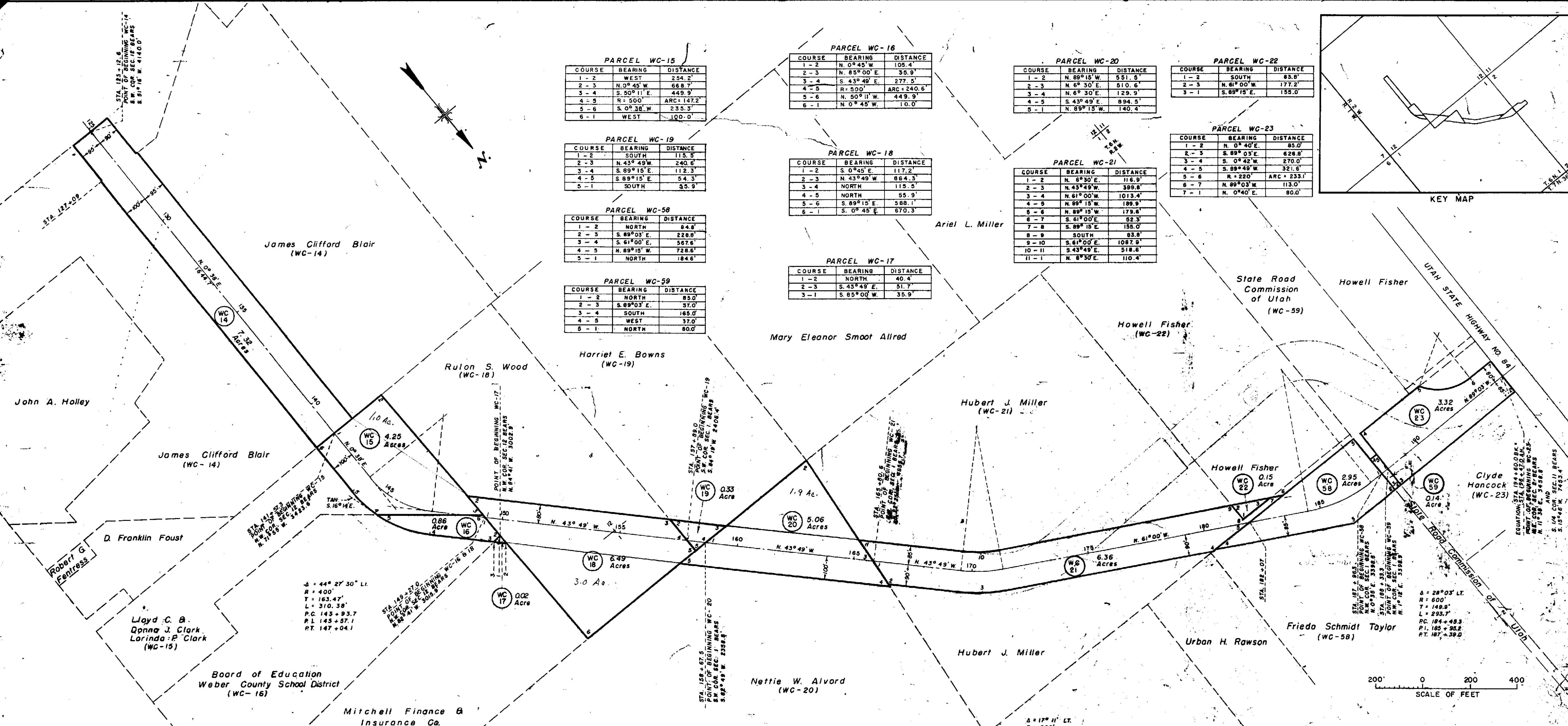
13 12 R.2 W. T.6 N.
18 7 R.1 W.



PARCEL WC-15			PARCEL WC-16			PARCEL WC-20			PARCEL WC-22		
COURSE	BEARING	DISTANCE	COURSE	BEARING	DISTANCE	COURSE	BEARING	DISTANCE	COURSE	BEARING	DISTANCE
1-2	WEST	254.2'	1-2	N. 0° 45' W	105.4'	1-2	N. 89° 15' W	551.5'	1-2	SOUTH	85.0'
2-3	N. 0° 45' W	668.7'	2-3	N. 85° 00' E	36.9'	2-3	N. 6° 30' E	610.6'	2-3	N. 61° 00' W	177.2'
3-4	S. 50° 11' E	449.9'	3-4	S. 43° 49' E	277.5'	3-4	N. 6° 30' E	129.9'	3-1	S. 89° 15' E	155.0'
4-5	R = 500'	ARC = 147.2'	4-5	R = 500'	ARC = 240.6'	4-5	S. 43° 49' E	894.5'			
5-6	S. 0° 38' W	235.5'	5-6	N. 50° 11' W	449.9'	5-6	N. 50° 11' W	449.9'			
6-1	WEST	100.0'	6-1	N. 0° 45' W	10.0'	5-1	N. 89° 15' W	140.4'			

PARCEL WC-19			PARCEL WC-18			PARCEL WC-21			PARCEL WC-23		
COURSE	BEARING	DISTANCE	COURSE	BEARING	DISTANCE	COURSE	BEARING	DISTANCE	COURSE	BEARING	DISTANCE
1-2	SOUTH	115.5'	1-2	S. 0° 45' E	117.2'	1-2	N. 6° 30' E	116.9'	1-2	N. 0° 40' E	85.0'
2-3	N. 43° 49' W	240.6'	2-3	N. 43° 49' W	864.3'	2-3	N. 43° 49' W	309.6'	2-3	S. 89° 03' E	626.8'
3-4	S. 89° 15' E	112.3'	3-4	NORTH	115.5'	3-4	N. 61° 00' W	1013.4'	3-4	S. 0° 42' W	270.0'
4-5	S. 89° 15' E	54.3'	4-5	NORTH	55.9'	4-5	N. 89° 15' W	189.9'	4-5	S. 89° 49' W	321.6'
5-1	SOUTH	35.9'	5-6	S. 89° 15' E	588.1'	6-6	N. 89° 15' W	179.6'	5-6	R = 220'	ARC = 233.1'
			6-1	S. 0° 45' E	670.3'	6-7	S. 61° 00' E	52.3'	6-7	N. 89° 03' W	113.0'
						7-8	S. 89° 15' E	155.0'	6-7	N. 0° 40' E	80.0'

PARCEL WC-58			PARCEL WC-17			PARCEL WC-59		
COURSE	BEARING	DISTANCE	COURSE	BEARING	DISTANCE	COURSE	BEARING	DISTANCE
1-2	NORTH	84.8'	1-2	NORTH	40.4'	1-2	NORTH	85.0'
2-3	S. 89° 03' E	228.8'	2-3	S. 43° 49' E	51.7'	2-3	S. 89° 03' E	37.0'
3-4	S. 61° 00' E	567.6'	3-1	S. 85° 00' W	35.9'	3-4	SOUTH	165.0'
4-5	N. 89° 15' W	728.6'				4-5	WEST	37.0'
5-1	NORTH	184.6'				5-1	NORTH	80.0'



3-8-61	REVISED TRACTS WC-21A, WC-21B, WC-22, AND WC-23
4-12-61	ADDED TRACTS WC-58 AND WC-59
12-2-60	REVISED TIES, TRACTS WC-14, WC-15, WC-16, WC-17, WC-18, WC-19, AND WC-20
7-27-60	REVISED SECTION TIES WC-21A AND WC-23

UNITED STATES
 DEPARTMENT OF THE INTERIOR
 BUREAU OF RECLAMATION
WEBER BASIN PROJECT-UTAH
WILLARD CANAL
 STA. 125+12.6 TO STA. 196+47.0
RIGHTS OF WAY MAP

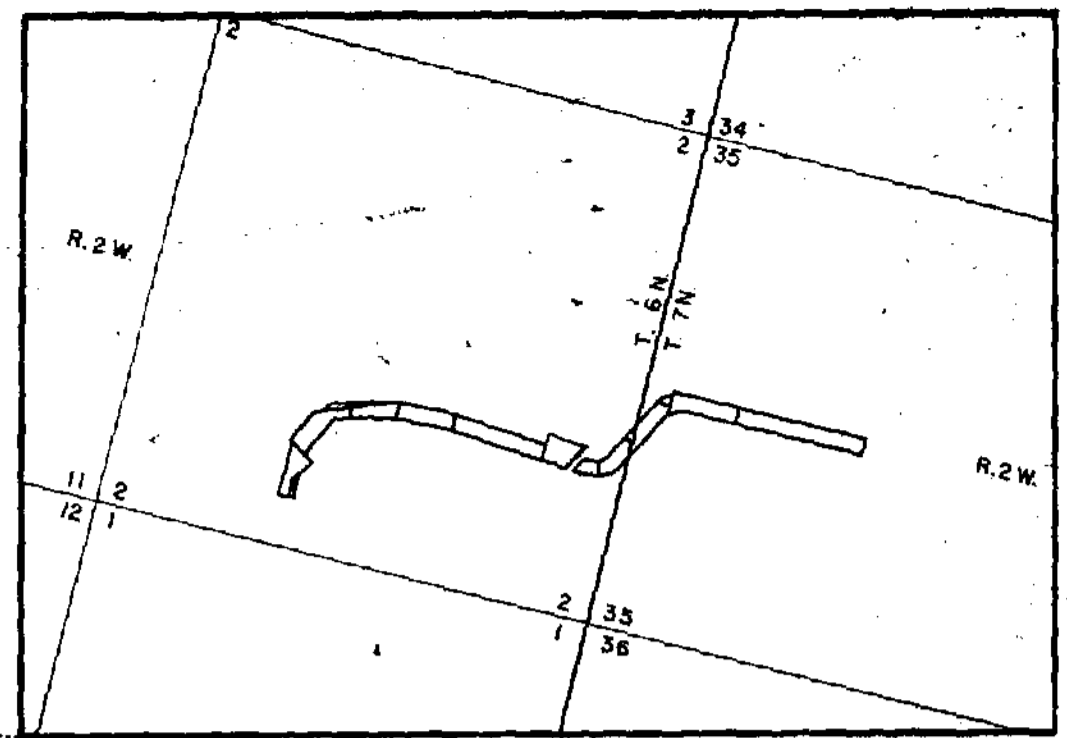
DRAWN: G.S.H. SUBMITTED: *W.J. Edwards*
 TRACED: R.S.H. RECOMMENDED: *Ray L. Grunholz*
 CHECKED: *W.F.* APPROVED: *Clinton D. Woods*

WEBER BASIN PROJECTS OFFICE ODENUR
 SHEET 3 OF 9 SHEETS 3-22-60 **526-412-497**

Δ = 44° 27' 30" LT.
 R = 400'
 T = 163.47'
 L = 310.38'
 P.C. 143+93.7
 P.L. 143+57.1
 P.T. 147+04.1

Δ = 17° 11' LT.
 R = 600'
 T = 90.7'
 L = 178.9'
 P.C. 169+80.8
 P.L. 170+41.8
 P.T. 171+30.7

Δ = 28° 03' LT.
 R = 600'
 T = 148.5'
 L = 293.7'
 P.C. 184+48.3
 P.L. 185+95.2
 P.T. 187+39.0



PARCEL WC-33

COURSE	BEARING	DISTANCE
1-2	EAST	26.4
2-3	SOUTH	32.5
3-4	SOUTH	105.5
4-5	R=380'	ARC=184.4'
5-1	EAST	93.2

PARCEL WC-62

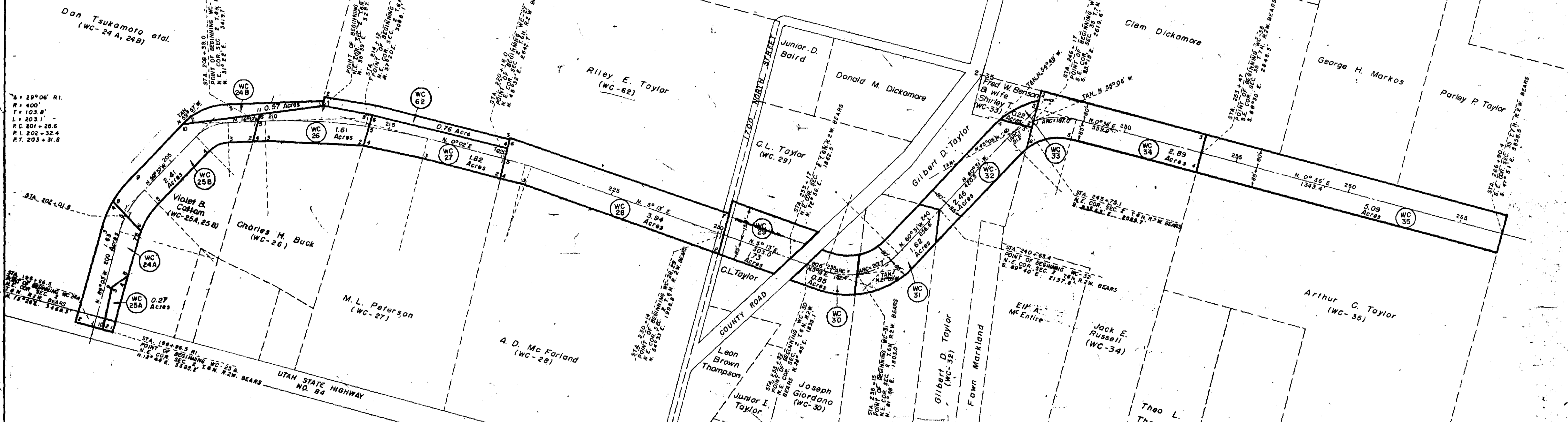
COURSE	BEARING	DISTANCE
1-2	WEST	400'
2-3	NORTHERLY	830.0'
3-4	EAST	400'
4-1	SOUTHERLY	830.0'

Δ = 61°08' RI.
R = 300'
T = 177.2'
L = 320.0'
P.C. 244+83.9
P.I. 246+61.0
P.T. 248+04.0 Bk.
247+87.1 Ah.

Δ = 43°46' RI.
R = 300'
T = 80.3'
L = 152.8'
P.C. 206+52.8
P.I. 207+33.2
P.T. 208+05.6

Δ = 16°13' RI.
R = 2500'
T = 356.4'
L = 708.0'
P.C. 209+63.4
P.I. 213+19.8
P.T. 216+71.4

Δ = 05°11' RI.
R = 300'
T = 13.5'
L = 27.1'
P.C. 221+07.3
P.I. 221+20.8
P.T. 221+34.4



PARCEL WC-24 A

COURSE	BEARING	DISTANCE
1-2	SOUTH	80.0'
2-3	N 89°02' W	432.2'
3-4	R=480'	ARC=118.8'
4-5	N 33°00' E	85.0'
5-6	N 33°00' E	124.5'
6-7	R=315'	ARC=22.9'
7-8	S 89°03' E	169.6'
8-9	S 50°00' E	91.5'
9-10	N 86°30' E	180.1'
10-1	SOUTH	42.1'

PARCEL WC-25 A

COURSE	BEARING	DISTANCE
1-2	SOUTH	42.9'
2-3	S 86°30' W	190.1'
3-4	N 50°00' W	91.5'
4-1	S 69°03' E	260.6'

PARCEL WC-25 B

COURSE	BEARING	DISTANCE
1-2	S 89°20' E	88.8'
2-3	S 16°12' E	107.7'
3-4	R=115'	ARC=87.9'
4-5	S 89°37' E	321.3'
5-6	R=515'	ARC=1600'
6-7	S 33°00' W	91.4'
7-8	S 33°00' W	85.0'
8-9	R=480'	ARC=125.2'
9-10	N 58°57' W	321.0'
10-11	N 21°45' W	339.4'
11-1	S 89°20' E	37.0'

PARCEL WC-26

COURSE	BEARING	DISTANCE
1-2	S 88°25' E	85.0'
2-3	S 11°15' E	423.2'
3-4	S 16°12' E	50.1'
4-5	N 89°20' W	88.8'
5-6	N 89°20' W	37.0'
6-7	N 21°45' W	267.4'
7-8	N 3°22' W	217.8'
8-1	S 88°25' E	56.0'

PARCEL WC-27

COURSE	BEARING	DISTANCE
1-2	N 88°45' E	85.0'
2-3	S 0°02' W	348.6'
3-4	S 2°58' E	262.0'
4-5	N 88°25' W	85.0'
5-6	N 88°25' W	56.0'
6-7	N 0°06' W	601.8'
7-1	N 88°45' E	44.0'

PARCEL WC-28

COURSE	BEARING	DISTANCE
1-2	S 89°30' E	85.0'
2-3	S 5°13' W	892.3'
3-4	S 0°02' W	101.0'
4-5	S 88°45' W	85.0'
5-6	S 88°45' W	91.0'
6-7	N 4°32' E	998.3'
7-1	S 89°30' E	93.3'

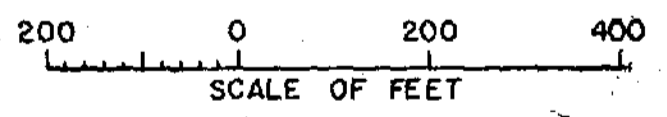
PARCEL WC-34

COURSE	BEARING	DISTANCE
1-2	WEST	136.4'
2-3	NORTH	735.5'
3-4	EAST	155.0'
4-5	S 0°36' W	560.7'
5-6	R=215'	ARC=202.8'
6-1	WEST	117.1'

4-18-61	REVISED PARCELS 24 A & 25 B
412 M.C.C.	
4-18-61	ADDED PARCEL WC-62
412 M.C.C.	
4-18-61	REVISED SEC. COR. TIES, AND DESCRIPTION OF PARCELS WC-24A, B WC-29
412 M.C.C.	
4-20-60	REVISED PARCEL WC-34
412 W.C.E.	

UNITED STATES
DEPARTMENT OF THE INTERIOR
BUREAU OF RECLAMATION
WEBER BASIN PROJECT-UTAH
WILLARD CANAL
STA. 196+47.0 TO STA. 266+90.4
RIGHTS OF WAY MAP

DRAWN: R. S. H. SUBMITTED: *[Signature]*
TRACED: R. S. H. RECOMMENDED: *[Signature]*
CHECKED: *[Signature]* APPROVED: *[Signature]*
WEBER BASIN PROJECTS OFFICE OGDEN, UT.
SHEET # 09-8 SHEETS 3-23-60 526-412-4972



George Markos

Catherine G. Taylor

Willdon A. Hales

Hyrum Hokanson

Nakaemon Miyagishima et al.

James N. Randall

Alice Newell Randall

George Davis

James F. Painter

Elmer W. Baker

Parley P. Taylor

George Davis (WC-45)

Wilford A. Jensen (WC-36)

Annie I. Jensen (WC-37)

F. Everem Huffman (WC-38)

Willdon A. Hales (WC-39)

Hyrum Hokanson (WC-40)

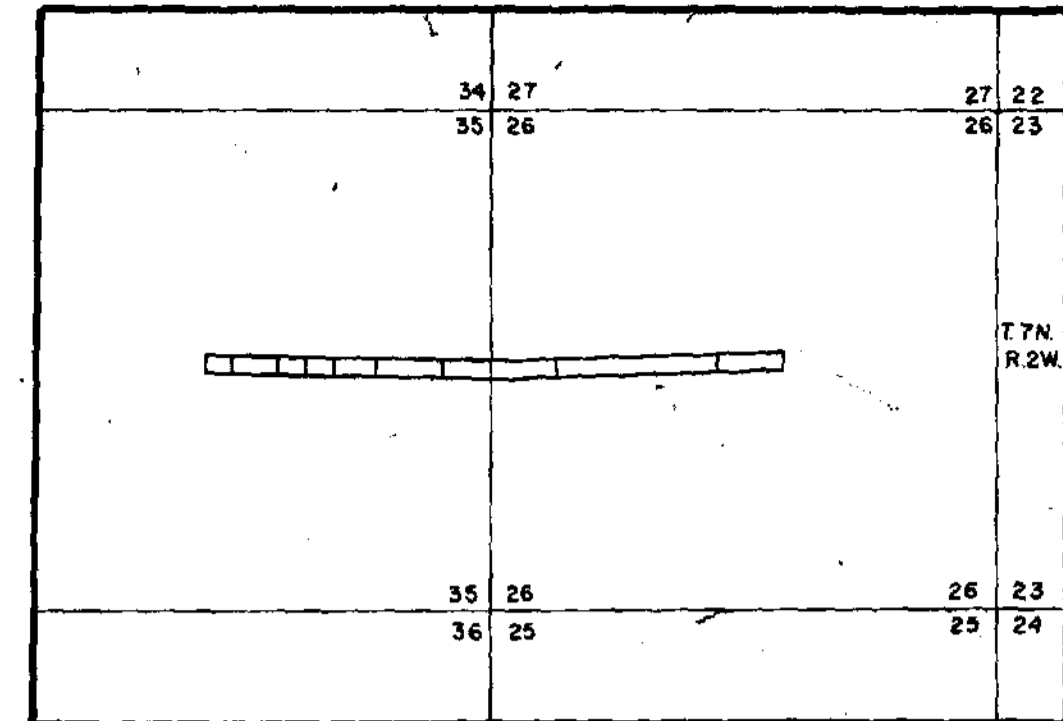
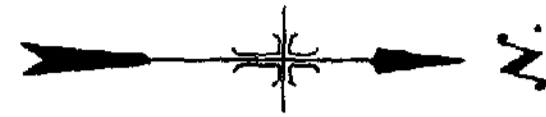
Charles A. Groberg (WC-41)

Anna F. Westergard (WC-42)

James N. Randall (WC-43)

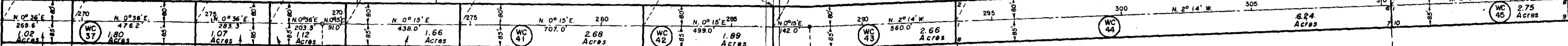
Alice Newell Randall (WC-44)

UTAH STATE HIGHWAY NO. 84



KEY MAP

2700 NORTH STREET

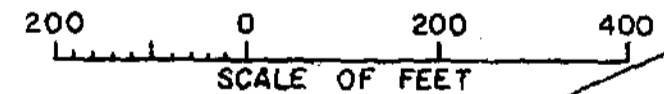


PARCEL WC-44

COURSE	BEARING	DISTANCE
1 - 2	WEST	80.0'
2 - 3	N. 2° 14' W	1282.0'
3 - 4	EAST	9.0'
4 - 5	NORTHERLY	396.0'
5 - 6	EAST	65.0'
6 - 7	EAST	85.0'
7 - 8	S. 2° 14' E	1878.0'
8 - 1	WEST	85.0'

PARCEL WC-45

COURSE	BEARING	DISTANCE
1 - 2	WEST	63.0'
2 - 3	SOUTHERLY	396.0'
3 - 4	WEST	9.0'
4 - 5	N. 2° 14' W	396.0'
5 - 6	N. 2° 27' W	267.0'
6 - 7	NORTHERLY	415.5'
7 - 8	EAST	88.0'
8 - 9	EAST	85.0'
9 - 10	S. 2° 14' E	682.4'
10 - 1	WEST	85.0'

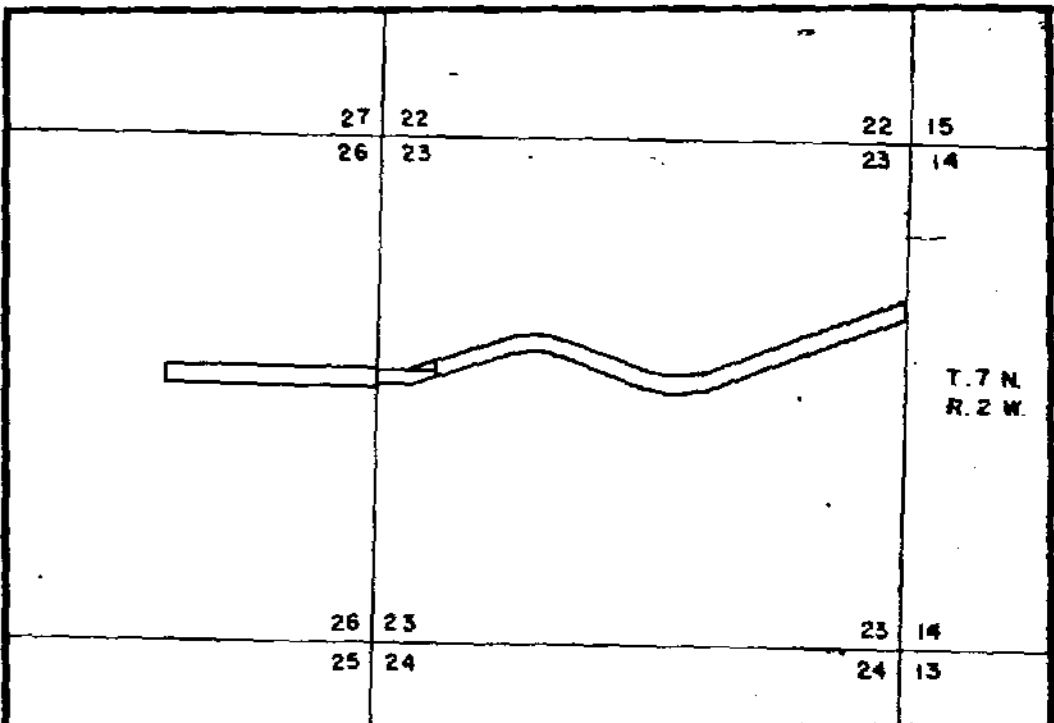


3 - 29 - 60 REVISED PARCELS WC-44 AND WC-45.
 412 W.J.E.
 12 - 2 - 60 REVISED TIE, TRACT WC-45.
 412
 8 - 11 - 50 REVISED SEC. COR. TIE OF PARCEL WC-36
 412

UNITED STATES DEPARTMENT OF THE INTERIOR
 BUREAU OF RECLAMATION
 WEBER BASIN PROJECT - UTAH
WILLARD CANAL
 STA. 266+90.4 TO STA. 318+90.2
 RIGHTS OF WAY MAP

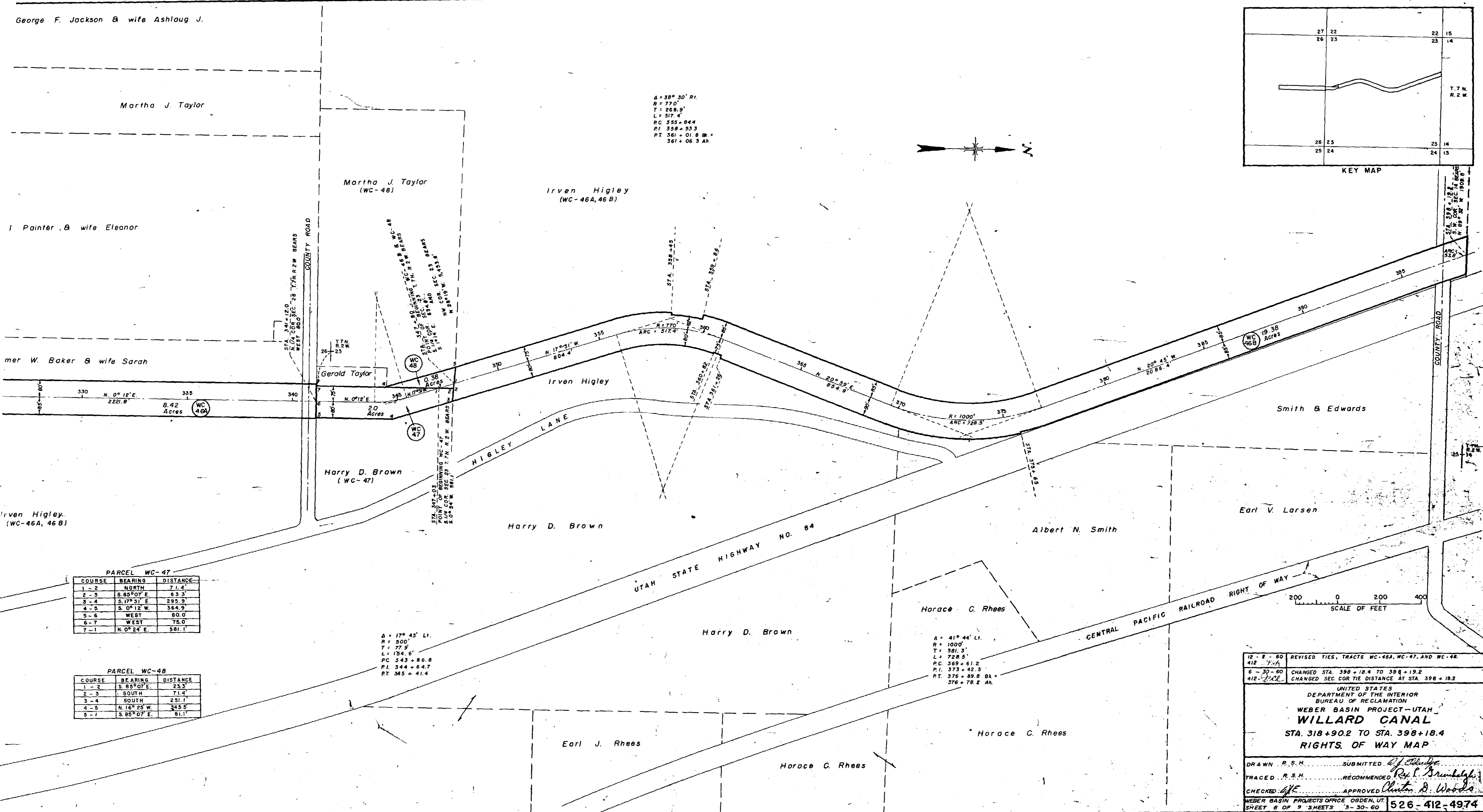
DRAWN R. S. H. SUBMITTED *[Signature]*
 TRACED R. S. H. RECOMMENDED *[Signature]*
 CHECKED *[Signature]* APPROVED *[Signature]*
 WEBER BASIN PROJECTS OFFICE OGDEN, UT.
 SHEET 5 OF 9 SHEETS 3-26-60 526-412-4973

George F. Jackson & wife Ashlaug J.



KEY MAP

$\Delta = 38^{\circ} 30' R.$
 $R = 770'$
 $T = 268.9'$
 $L = 517.4'$
 $P.C. 355 + 84.4$
 $P.T. 358 + 53.3$
 $P.T. 361 + 01.8 Bk.$
 $361 + 06.3 Ah.$



PARCEL WC-47

COURSE	BEARING	DISTANCE
1-2	NORTH	7.14'
2-3	S. 85° 07' E.	63.3'
3-4	S. 17° 31' E.	295.9'
4-5	S. 0° 12' W.	364.9'
5-6	WEST	80.0'
6-7	WEST	75.0'
7-1	N. 0° 24' E.	581.1'

PARCEL WC-48

COURSE	BEARING	DISTANCE
1-2	S. 85° 07' E.	23.3'
2-3	SOUTH	7.14'
3-4	SOUTH	251.1'
4-5	N. 16° 25' W.	345.5'
5-1	S. 85° 07' E.	81.1'

$\Delta = 17^{\circ} 45' L.$
 $R = 500'$
 $T = 77.9'$
 $L = 154.6'$
 $P.C. 343 + 86.8$
 $P.T. 344 + 64.7$
 $P.T. 345 + 41.4$

$\Delta = 41^{\circ} 44' L.$
 $R = 1000'$
 $T = 581.3'$
 $L = 728.5'$
 $P.C. 369 + 61.2$
 $P.T. 373 + 42.5$
 $P.T. 376 + 89.8 Bk.$
 $376 + 78.2 Ah.$

12-2-60	REVISED TIES, TRACTS WC-46A, WC-47, AND WC-48.
412-XXX	
6-30-60	CHANGED STA. 398+18.4 TO 398+19.2
412-XXX	CHANGED SEC COR TIE DISTANCE AT STA. 398+19.2

UNITED STATES
 DEPARTMENT OF THE INTERIOR
 BUREAU OF RECLAMATION
WEBER BASIN PROJECT-UTAH
WILLARD CANAL
 STA. 318+90.2 TO STA. 398+18.4
 RIGHTS OF WAY MAP

DRAWN R.S.M. SUBMITTED *[Signature]*
 TRACED R.S.M. RECOMMENDED *[Signature]*
 CHECKED *[Signature]* APPROVED *[Signature]*

WEBER BASIN PROJECTS OFFICE OGDEN, UT.
 SHEET 6 OF 9 SHEETS 5-30-60 **526-412-4974**

George F. Jackson & wife Ashlaug J.

Martha J. Taylor

Virgil Painter & wife Eleanor

Elmer W. Baker & wife Sarah

Irven Higley
(WC-46A, 46B)

Martha J. Taylor
(WC-48)

Irven Higley
(WC-46A, 46B)

Gerald Taylor

Harry D. Brown
(WC-47)

Harry D. Brown

Harry D. Brown

Albert N. Smith

Horace C. Rhees

Earl J. Rhees

Horace G. Rhees

Horace C. Rhees

Earl V.

$\Delta = 38^{\circ} 30' R$.
 $R = 770'$
 $T = 268.9'$
 $L = 517.4'$
 $PC = 355 + 84.4$
 $PI = 358 + 53.3$
 $PT = 361 + 01.8 BL =$
 $361 + 06.3 AL$



POINT OF BEGINNING WC-46A
 $S 1/4$ COR. SEC. 25 T. 7N. R. 2W. BEARS
 $S 0^{\circ} 39' E. 30.42'$

STA. 341 + 12.0
 $N 1/4$ COR. SEC. 28 T. 7N. R. 2W. BEARS
 WEST 80.0

POINT OF BEGINNING WC-46B
 $S 1/4$ COR. SEC. 28 T. 7N. R. 2W. BEARS
 $S 17^{\circ} 31' E. 55.14'$

POINT OF BEGINNING WC-47
 $S 1/4$ COR. SEC. 23 T. 7N. R. 2W. BEARS
 $S 0^{\circ} 54' W. 88.11'$

POINT OF BEGINNING WC-48
 $S 1/4$ COR. SEC. 23 T. 7N. R. 2W. BEARS
 $S 0^{\circ} 54' W. 88.11'$

PARCEL WC-47

COURSE	BEARING	DISTANCE
1-2	NORTH	71.4'
2-3	S. 85° 07' E.	63.3'
3-4	S. 17° 31' E.	295.9'
4-5	S. 0° 12' W.	364.9'
5-6	WEST	80.0'
6-7	WEST	75.0'
7-1	N. 0° 24' E.	581.1'

PARCEL WC-48

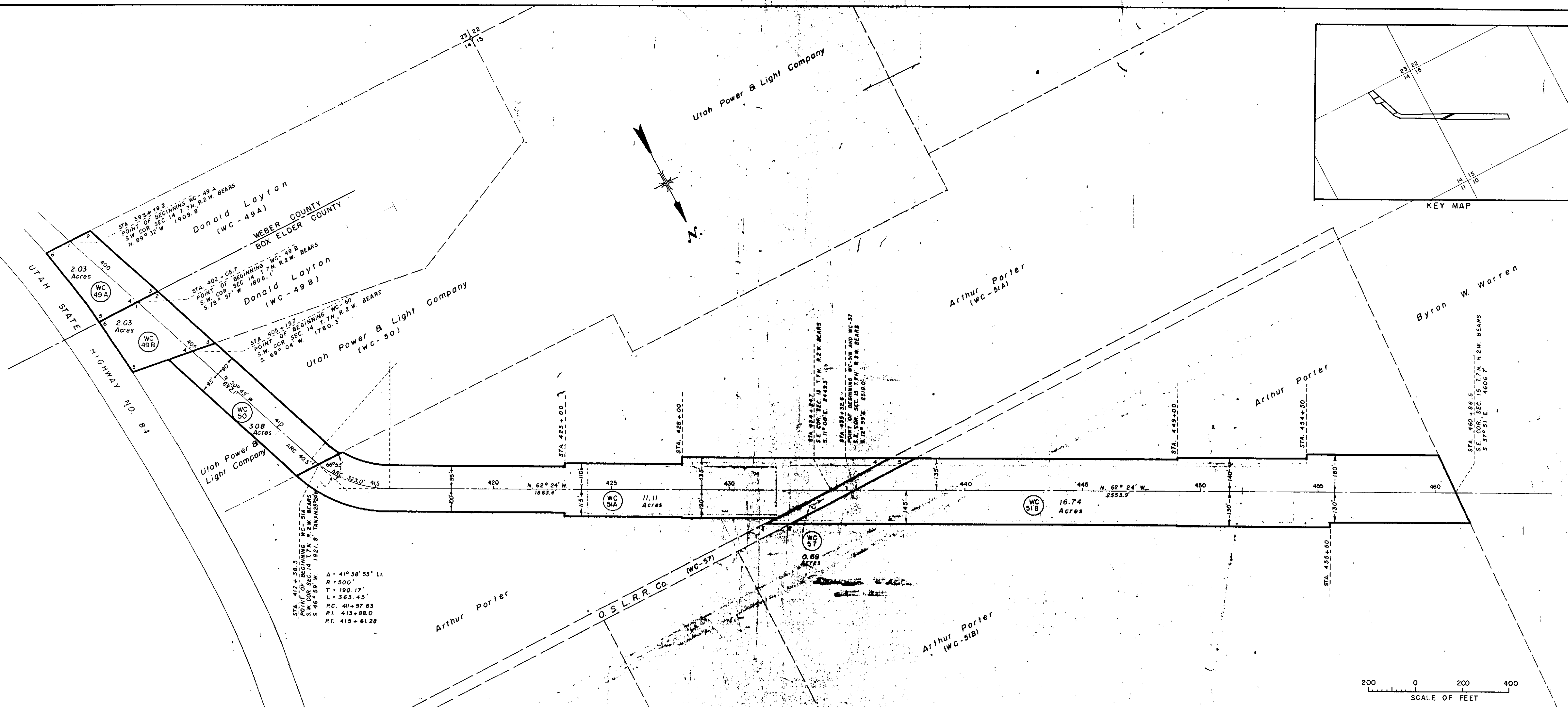
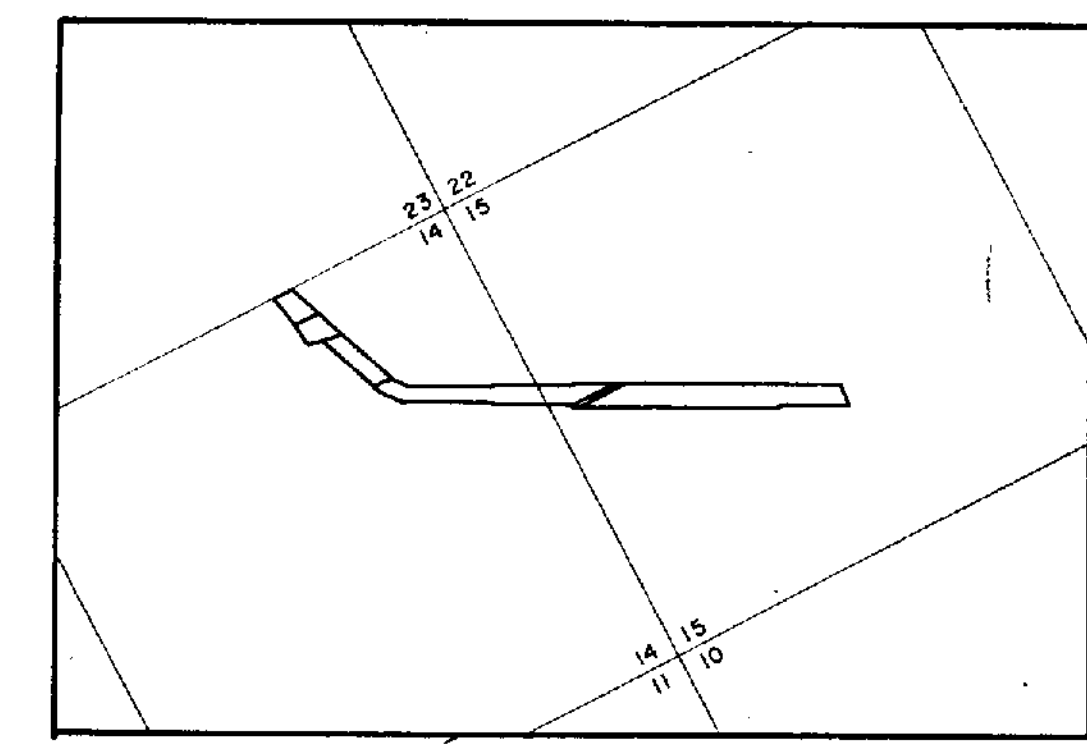
COURSE	BEARING	DISTANCE
1-2	S. 85° 07' E.	23.3'
2-3	SOUTH	71.4'
3-4	SOUTH	251.1'
4-5	N. 16° 25' W.	345.5'
5-1	S. 85° 07' E.	81.1'

$\Delta = 17^{\circ} 43' Lt.$
 $R = 500'$
 $T = 77.9'$
 $L = 134.6'$
 $PC = 343 + 86.8$
 $PI = 344 + 64.7$
 $PT = 345 + 41.4$

$\Delta = 41^{\circ} 44' Lt.$
 $R = 1000'$
 $T = 381.3'$
 $L = 728.5'$
 $PC = 369 + 61.2$
 $PI = 373 + 42.3$
 $PT = 376 + 89.8 BL =$
 $376 + 79.2 AL$

12-2-6
 412
 6-30-6
 412-5-22

DRAWN
 TRACED
 CHECKED
 WEBER BAS
 SHEET 6



STA. 415+38.3
 POINT OF BEGINNING WC-51A
 S.W. COR. SEC. 14 T. 7N. R. 2W. BEARS
 S. 46° 59' W. 192.1' TAN 142° 59' 54"
 A = 41° 38' 55" LI.
 R = 500'
 T = 190.17'
 L = 363.45'
 P.C. 411+97.83
 P.T. 413+88.0
 P.T. 413+61.28

PARCEL WC-49A

COURSE	BEARING	DISTANCE
1-2	N. 89° 32' W.	96.6'
2-3	N. 20° 46' W.	385.7'
3-4	EAST	96.3'
4-5	EAST	186.0'
5-6	ALONG HWY. BDY.	375.0'
6-1	N. 89° 32' W.	112.0'

PARCEL WC-49B

COURSE	BEARING	DISTANCE
1-2	WEST	36.3'
2-3	N. 20° 46' W.	325.0'
3-4	S. 82° 08' E.	102.6'
4-5	S. 82° 08' E.	269.0'
5-6	ALONG HWY. BDY.	255.0'
6-1	WEST	188.0'

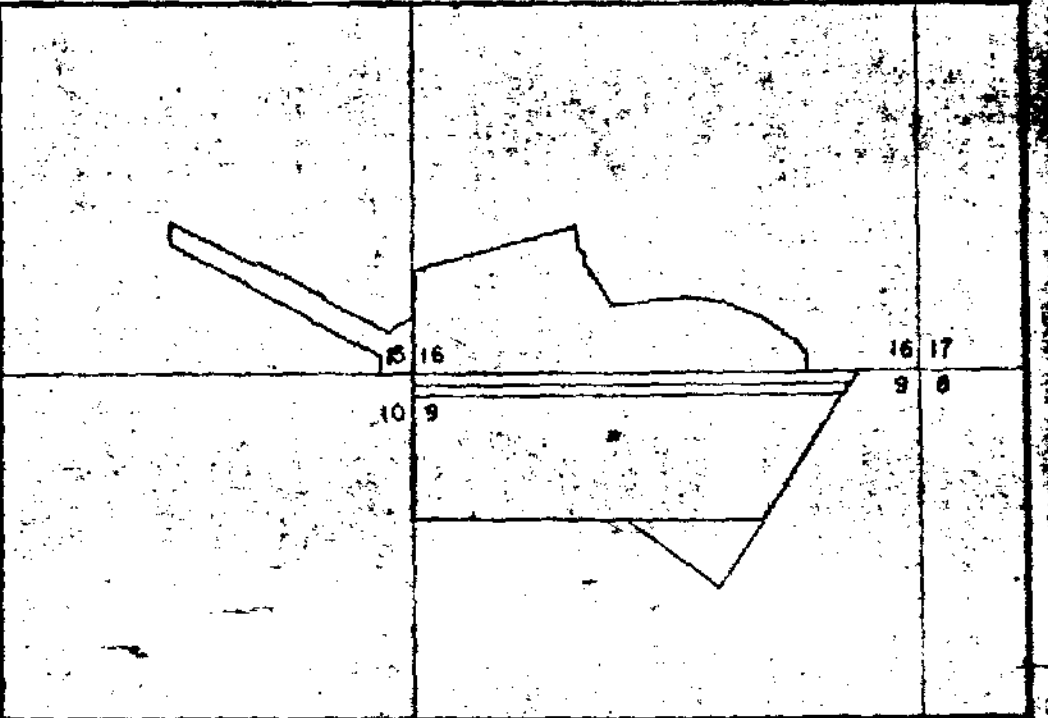
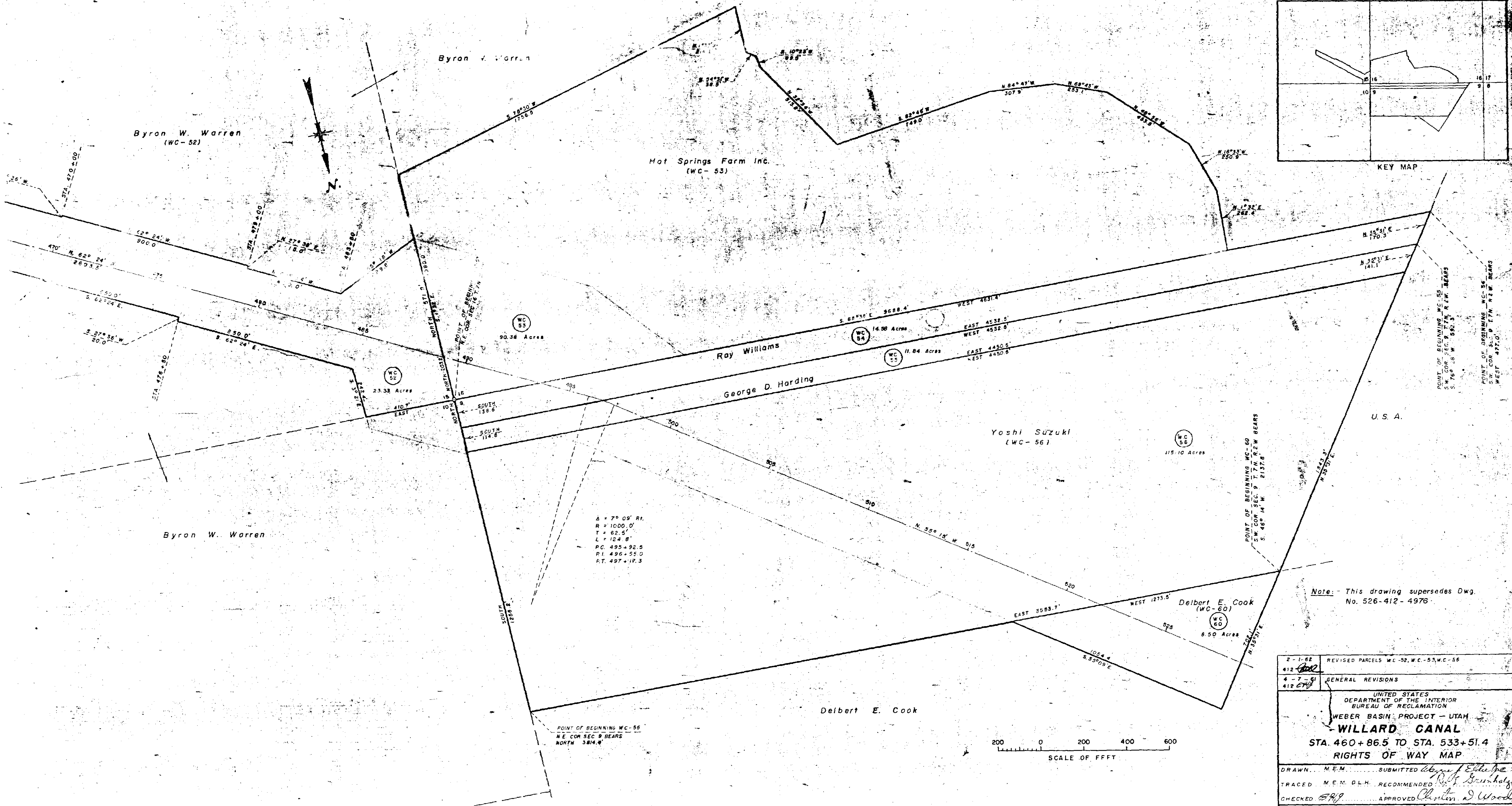
PARCEL WC-57

COURSE	BEARING	DISTANCE
1-2	EAST	313.0'
2-3	S. 62° 24' E.	107.9'
3-4	WEST	604.4'
4-5	N. 62° 24' W.	107.9'
5-1	EAST	291.4'

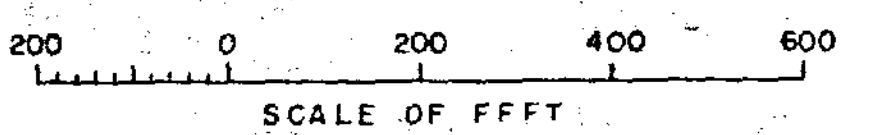


Note: This drawing supersedes dwg. No. 526-412-4975

5-24-61 412 <i>WJE</i>	REVISED TRACT WC-51A, WC-51B, & WC-57
12-29-60 412 <i>WJE</i>	REVISED TRACTS WC-51A, WC-51B, & WC-57
UNITED STATES DEPARTMENT OF THE INTERIOR BUREAU OF RECLAMATION WEBER BASIN PROJECT-UTAH WILLARD CANAL STA. 398+19.2 TO STA. 460+86.5 RIGHTS OF WAY MAP	
DRAWN R. S. H.	SUBMITTED <i>W. J. Elledge</i>
TRACED R. S. H.	RECOMMENDED <i>R. J. Grunwaldt</i>
CHECKED <i>WJE</i>	APPROVED <i>Clinton D. Woods</i>
WEBER BASIN PROJECTS OFFICE OGDEN, UT.	
SHEET 7 OF 9 SHEETS 6-29-60	526-412-5023



Note: - This drawing supersedes Dwg. No. 526-412-4976



2-1-62	REVISED PARCELS WC-52, WC-53, WC-56
412-602	
4-7-61	GENERAL REVISIONS
412-610	
UNITED STATES DEPARTMENT OF THE INTERIOR BUREAU OF RECLAMATION WEBER BASIN PROJECT - UTAH WILLARD CANAL STA. 460+86.5 TO STA. 533+51.4 RIGHTS OF WAY MAP	
DRAWN... M.E.M.	SUBMITTED <i>Edythe</i>
TRACED... M.E.M. D.L.H.	RECOMMENDED <i>Roy Brunholz</i>
CHECKED <i>58/9</i>	APPROVED <i>Charles J. Woods</i>
WEBER BASIN PROJECTS OFFICE OGDEN, UT.	SHEET 6 OF 9 SHEETS 7-7-60
	526-412-5024

